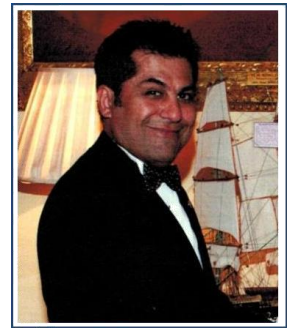




## Captain Zarir Soli Irani

Sr. Partner, Advanced Marine Accident Investigator, Expert witness on Maritime claims, Master Mariner



- **MASTER MARINER FG (Unlimited) from MCA, UK (valid)**
- **MBA, FICS, AFNI, FIIMS, CII, NAMS-CMS**
- **Vice President, IIMS (Global)**
- **Full Member of NAMS CMS Global, USA**
- **Honorary Secretary, Nautical Institute, UAE Branch and Associate Fellow of Nautical Institute**
- **HAZMAT Course, Warranty surveying course**
- **Maritime Law-Southampton-short course**
- **Advanced Accident investigation course**
- **NEPIA Loss Prevention course**
- **Accredited CMID Inspector for offshore vessels.**
- **Member of Chartered Insurance Institute (CII)-UK**

### PERSONAL PROFILE

Captain Zarir Irani is an Expert witness at DIFC courts & Federal courts of Appeal at Abu Dhabi, a Master mariner with command experience on globally tramping vessels (unlimited) and has International claims related expertise as a Principal Marine Consultant. He has been a principal consultant since 2004 in the Middle East and has accumulated 24 years of Maritime experience.

Capt Irani has undertaken Rig Move Simulation and advanced rig moving courses at Aberdeen & Malaysia and is an experienced Rig move warranty Surveyor.

### EMPLOYMENT HISTORY

Managing Director, Constellation Marine Services LLC, (UAE) **April 2007 – Present**

Vice-President – Global IIMS (UK) **Since Sept. 2016**

Regional Director, IIMS, (UK) **Oct 2007 – Present**

Operations Manager/ Principal Marine Consultant, EnR Consultancy **July 2004 – March 2007**

### TECHNICAL AREA OF EXPERTISE

- ❖ Collision Investigation of all seagoing vessels and offshore installations.
- ❖ Hull and Structural damage Surveys on board offshore support vessels.

- ❖ Flag Registration Consultants, Hull and Machinery Surveyors.
- ❖ Investigations into grounding, Collisions and/or contact damages.
- ❖ Towing, fastening Surveys, warranty Surveys
- ❖ Investigations into Stoppages at sea, Diversions and delays.
- ❖ Hatch covers Ultrasound inspection. (Training Course from SDT Sherlog)
- ❖ Casualty inspections and Internal Safety Audits.
- ❖ Project Cargo & heavy lifts – Stowage, Lashing approvals and Superintendence.
- ❖ Inquiry into overloading of vessel and/or assisting Master in stability Calculation.
- ❖ Inquiry into Fire and other Marine accidents.
- ❖ Inaccessible cargo space surveys to measure hatch volume.

### RECENT PROJECTS:

- ❖ Expert witness and advisory to the Judge at Federal Courts of Appeal.
- ❖ Material Management Plan for Nuclear Plant.
- ❖ Explosion investigation on Board tankers.
- ❖ CMID (AVI) inspector offshore & support vessels.
- ❖ P&I Hull and Machinery Surveys including Ultrasound Hatch Testing
- ❖ Underwater Hull Inspection to Ascertain Hull Damage & Fouling at Anchorage.
- ❖ Rig Moves and Towage Approvals
- ❖ Discharge and Damaged Cargo Survey of Grain in Bulk conducted.
- ❖ Survey to Investigate the Damage to a Steering Gear at Saudi Arabia.
- ❖ Condition Survey of a Mobile Drilling Unit in the field.
- ❖ Conducted magnetic compass Deviation.